

# CATALOGO

## INSERTI FILETTATI

[WWW.DUEEMMESIDOL.IT](http://WWW.DUEEMMESIDOL.IT)



# INDEX

		<b>KTT - TESTA TONDA CORPO CILINDRICO LISCIO</b> .....	6
FH-RB - FLAT HEAD ROUND BODY PLAIN			
		<b>KTTK - TESTA TONDA CORPO CILINDRICO LISCIO CHIUSO</b>	
FH-RBC - FLAT HEAD ROUND BODY PLAIN CLOSE END			
		<b>KTR - TESTA RIDOTTA CORPO CILINDRICO LISCIO</b> .....	7
RH-RB - REDUCED HEAD ROUND BODY PLAIN			
		<b>KTRC - TESTA RIDOTTA CORPO CILINDRICO LISCIO CHIUSO</b>	
RH-RBC - REDUCED HEAD ROUND BODY PLAIN CLOSE END			
		<b>KTTZ - TESTA TONDA CORPO CILINDRICO ZIGRINATO</b> .....	8
FH-KB - FLAT HEAD KNURLED BODY			
		<b>KTTZC - TESTA TONDA CORPO CILINDRICO ZIGRINATO CHIUSO</b>	
FH-KBC - FLAT HEAD KNURLED BODY CLOSE END			
		<b>KTRZ - TESTA RIDOTTA CORPO CILINDRICO ZIGRINATO</b> .....	9
RH-KB - REDUCED HEAD KNURLED BODY			
		<b>KTRZC - TESTA RIDOTTA CORPO CILINDRICO ZIGRINATO CHIUSO</b>	
RH-KBC - REDUCED HEAD KNURLED BODY CLOSE END			
		<b>KTS - TESTA SVASATA CORPO CILINDRICO LISCIO</b> .....	10
CH-RB - COUNTERSUNK HEAD ROUND BODY PLAIN			
		<b>KTSZ - TESTA SVASATA CORPO CILINDRICO ZIGRINATO</b> .....	10
CH-KB - COUNTERSUNK HEAD KNURLED BODY			
		<b>KTSZC - TESTA SVASATA CORPO CILINDRICO ZIGRINATO CHIUSO</b> .....	11
CH-KBC - COUNTERSUNK HEAD KNURLED BODY CLOSE END			
		<b>KTTSE - TESTA TONDA CORPO SEMI ESAGONALE</b> .....	11
FH-SHB - FLAT HEAD SEMI-HEX BODY			
		<b>KTTQ - TESTA TONDA CORPO QUADRO</b> .....	12
FH-SQB - FLAT HEAD SQUARE BODY			
		<b>KSLB - TESTA TONDA CORPO CILINDRICO APERTO</b>	
FH-SLB - FLAT HEAD SLOTTED BODY			
		<b>KTTE - TESTA TONDA CORPO ESAGONALE</b> .....	13
FH-FHB - FLAT HEAD FULL HEX BODY			
		<b>KTTEC - TESTA TONDA CORPO ESAGONALE CHIUSO</b>	
FH-FHBC - FLAT HEAD FULL HEX BODY CLOSE END			
		<b>KTRE - TESTA RIDOTTA CORPO ESAGONALE</b> .....	14
RHH-FHB - REDUCED HEX HEAD FULL-HEX BODY			
		<b>KTREC - TESTA RIDOTTA CORPO ESAGONALE CHIUSO</b>	
RHH-FHBC - REDUCED HEX HEAD FULL-HEX BODY CLOSE END			
		<b>KTRSE - TESTA RIDOTTA CORPO SEMI-ESAGONALE</b> .....	15
RHH-IHB - REDUCED HEX HEAD INNER-HEX BODY			



**KTTSE - TESTA TONDA CORPO SEMI-ESAGONALE** ..... 15  
 FH-IHB - FLAT HEAD INNER-HEX BODY



**KTRZ - TESTA RIDOTTA CORPO CILINDRICO ZIGRINATO FILETTO IN POLLICI** ..... 16  
 RH-KB-UK - REDUCED HEAD KNURLED BODY



**KTRSE - TESTA RIDOTTA CORPO SEMI-ESAGONALE FILETTO IN POLLICI** ..... 16  
 RHH-IHB-UK - REDUCED HEX HEAD INNER-HEX BODY-UK



**KTT - TESTA TONDA CORPO CILINDRICO LISCIO IN ACCIAIO INOX** ..... 17  
 FH-RB/SS - FLAT HEAD ROUND BODY PLAIN STAINLESS STEEL



**KTR - TESTA RIDOTTA CORPO CILINDRICO LISCIO IN ACCIAIO INOX** ..... 17  
 RH-RB/SS - REDUCE HEAD ROUND BODY PLAIN STAINLESS STEEL



**KTTZ - TESTA TONDA CORPO CILINDRICO ZIGRINATO IN ACCIAIO INOX** ..... 18  
 FH-KB/SS - FLAT HEAD KNURLED BODY STAINLESS STEEL

**KTTZC - TESTA TONDA CORPO CILINDRICO ZIGRINATO CHIUSO ACCIAIO INOX**  
 FH-KBC/SS - FLAT HEAD KNURLED BODY CLOSE END STAINLESS STEEL



**KTRZ - TESTA RIDOTTA CORPO CILINDRICO ZIGRINATO IN ACCIAIO INOX** ..... 19  
 RH-KB/SS - REDUCE HEAD KNURLED BODY STAINLESS STEEL

**KTRZC - TESTA RIDOTTA CORPO CILINDRICO ZIGRINATO CHIUSO IN ACCIAIO INOX**  
 RH-KBC/SS - REDUCE HEAD KNURLED BODY CLOSE END STAINLESS STEEL



**KTS - TESTA SVASATA CORPO CILINDRICO LISCIO IN ACCIAIO INOX** ..... 20  
 CH-RB/SS - COUNTERSUNK HEAD ROUND BODY PLAIN STAINLESS STEEL



**KTSZ - TESTA SVASATA CORPO CILINDRICO ZIGRINATO IN ACCIAIO INOX** ..... 21  
 CH-KB/SS - COUNTERSUNK HEAD KNURLED BODY STAINLESS STEEL

**KTSZC - TESTA SVASATA CORPO CILINDRICO ZIGRINATO CIECO IN ACCIAIO INOX**  
 CH-KBC/SS - COUNTERSUNK HEAD KNURLED BODY CLOSE END STAINLESS STEEL



**KTRSE - TESTA RIDOTTA CORPO SEMI-ESAGONALE IN ACCIAIO INOX** ..... 22  
 RHH-IHB/SS - REDUCE HEX HEAD INNER-HEX BODY STAINLESS STEEL

**KTRSEC - TESTA RIDOTTA CORPO SEMI-ESAGONALE IN ACCIAIO INOX CHIUSI**  
 RHH-IHBC/SS - REDUCE HEAD INNER-HEX BODY CLOSE END STAINLESS STEEL



**KTTSE - TESTA TONDA CORPO SEMI-ESAGONALE IN ACCIAIO INOX** ..... 23  
 FH-IHB/SS - FLAT HEAD INNER-HEX BODY STAINLESS STEEL

**KTTSEC - TESTA TONDA CORPO SEMI-ESAGONALE CHIUSO ACCIAIO INOX**  
 FH-IHBC/SS - FLAT HEAD INNER-HEX BODY CLOSE END STAINLESS STEEL



**KTT - TESTA TONDA CORPO CILINDRICO LISCIO ALLUMINIO** ..... 24  
 FH-RB/AL - FLAT HEAD ROUND BODY PLAIN ALUMINIUM

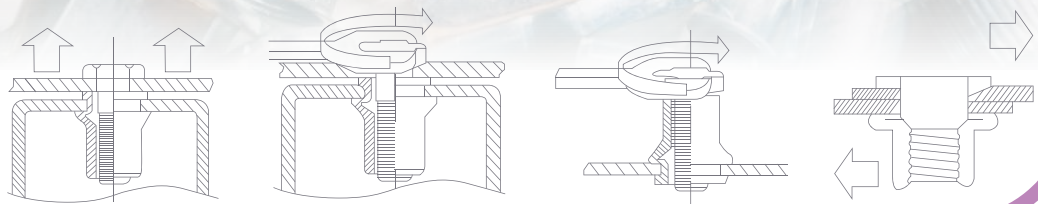
**KTR - TESTA RIDOTTA CORPO CILINDRICO LISCIO ALLUMINIO**  
 RH-RB/AL - REDUCED HEAD ROUND BODY PLAIN ALUMINIUM



**KTTZ - TESTA TONDA CORPO CILINDRICO ZIGRINATO ALLUMINIO** ..... 25  
 FH-KB/AL - FLAT HEAD KNURLED BODY ALUMINIUM

**KTRZ - TESTA RIDOTTA CORPO CILINDRICO ZIGRINATO ALLUMINIO**  
 RH-KB/AL - REDUCED HEAD KNURLED BODY ALUMINIUM

# TECHNICAL DATA SHEET



Axial proof load

Broken torque

Torque to turn

Shearing strenght

Table 1: Axial proof load for threa (Carico prova assiale)

Unit: N

Rivet nut	Mechanical char		Thread size						
			M3	M4	M5	M6	M8	M10	M12
Round and Hex, Flat and (Reduced) countersunk head	Proof load	Steel/stainless steel	3900	6800	11500	16500	25000	32000	34000
		Aluminum	1900	4000	6500	7800	12300	17500	-

Table 2: Broken Torque (Coppia di rottura)

Unit: N.m

Thread size	M3	M4	M5	M6	M8	M10	M12
Steel/Inox Flat head, round and hex	2	5	8.5	15	26	50	80
Steel/Inox Countersunk head, round and hex	1	4	8	15	26	45	70
Steel/Inox Reduced head, round and hex	1	3	6	11	20	32	50
Steel/Inox Reduced (counter) head round body	0.7	2.5	5	8	20	25	-

Table 3: Turning Torque for clamping force (Coppia di rotazione)

Unit: N.m

Thread size	M3	M4	M5	M6	M8	M10	M12
Steel/Inox Flat head, round body	0.5	1	2	4.5	5.5	11	30
Steel/Inox (Reduced) counter head round	0.4	0.8	1.5	3.5	4.5	8.5	24
Aluminum Flat head, round body	0.25	0.9	1.5	3.5	5	6.5	21
Aluminum (Reduced) counter, round body	0.2	0.7	1.2	2.5	4	5	16

Table 4: Shearing Strenght (Resistenza al taglio)

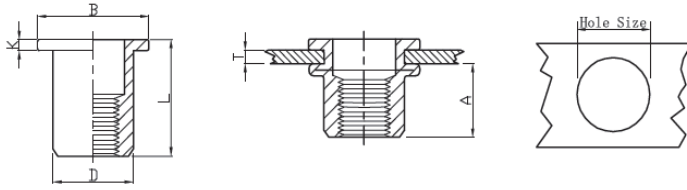
Unit: N

Rivet nut	Mechanical char		Thread size						
			M3	M4	M5	M6	M8	M10	M12
Round and Hex, Flat and (Reduced) countersunk head	Shearing	Steel/stainless steel	900	1500	2000	3000	4400	5000	6500
		Aluminum	600	1000	1200	2000	2400	3800	-

1: Steel for C1008 / 2: Stainless steel for ANSI304 / 3: Aluminium for Almg2.5  
All these data are just for your reference. The exact data please follow our physical test

# KTT TESTA TONDA CORPO CILINDRICO LISCIO

## FH-RB FLAT HEAD ROUND PLAIN BODY

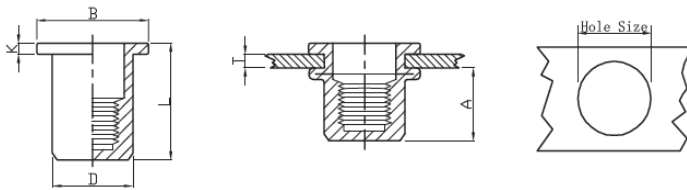


Unit: mm

THREAD	P/N	LD P/N	T (grip range) Min Max	A Ref	Hole size +0.10	D +0.07 -0.1	B +/-0,3	K +/-0,2	L +/-0,3
M3	FH-RB-0315	KTTM3C1	0.5-1.5	4,7	5,0	4,9	7,2	0,8	8,5
M3	FH-RB-0325	KTTM3L1	1.5-2.5	4,7	5,0	4,9	7,2	0,8	9,5
M4	FH-RB-0420	KTTM4C1	0.5-2.0	6,0	6,0	5,9	8,5	0,8	10,3
M4	FH-RB-0435	KTTM4L1	2.0-3.5	6,0	6,0	5,9	8,5	0,8	12,0
M5	FH-RB-0525	KTTM5C1	0.5-2.5	7,5	7,0	6,9	10,0	1,0	13,0
M5	FH-RB-0550	KTTM5L1	2.5-5.0	8,5	7,0	6,9	10,0	1,0	17,0
M6	FH-RB-0630	KTTM6C1	0.5-3.0	9,2	9,0	8,9	12,3	1,3	15,5
M6	FH-RB-0655	KTTM6L1	3.0-5.5	9,2	9,0	8,9	12,3	1,3	18,0
M8	FH-RB-0835	KTTM8C1	0.5-3.5	11,5	11,0	10,9	15,0	1,5	18,5
M8	FH-RB-0860	KTTM8L1	3.5-6.0	11,5	11,0	10,9	15,0	1,5	21,0
M10	FH-RB-1025	KTTM10C1/13	0.5-2.5	11,5	13,0	12,9	16,3	1,5	17,0
M10	FH-RB-1040	KTTM10L1/13	2.5-4.0	12,5	13,0	12,9	17,0	1,6	21,0
M10	FH-RB-1035(12H)	KTTM10C1/12	1.0-3.5	11,0	12,0	11,9	16,0	1,6	19,0
M12	FH-RB-1240	KTTM12C1/15	1.0-4.0	13,5	15,0	14,9	18,0	1,7	22,0
M12	FH-RB-1265	KTTM12L1/15	4.0-6.5	13,5	15,0	14,9	18,0	1,7	25,0
M12	FH-RB-1240(16H)	KTTM12C1/16	1.0-4.0	16,0	16,0	15,9	22,0	2,0	25,0

# KTTC TESTA TONDA CORPO CILINDRICO LISCIO CHIUSO

## FH-RBC FLAT HEAD ROUND BODY PLAIN CLOSE END



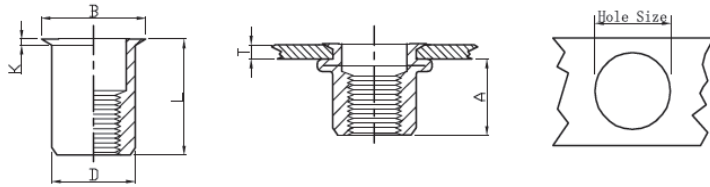
(MATERIALE DISPONILE SOLO SU RICHIESTA / ONLY ON DEMAND)

Unit: mm

THREAD	P/N	LD P/N	T (grip range) Min Max	A Ref	Hole size +0.10	D +0.07 -0.1	B +/-0,3	K +/-0,2	L +/-0,3
M3	FH-RBC-0315	KTTCM3C1	0.5-1.5	10,0	5,0	4,9	7,2	0,8	13,3
M4	FH-RBC-0420	KTTCM4C1	0.5-2.0	11,3	6,0	5,9	9,0	0,8	16,0
M4	FH-RBC-0440	KTTCM4L1	2.0-4.0	11,3	6,0	5,9	9,0	0,8	18,0
M5	FH-RBC-0525	KTTCM5C1	0.5-2.5	11,5	7,0	6,9	10,0	1,0	17,0
M5	FH-RBC-0550	KTTCM5L1	2.5-5.0	11,5	7,0	6,9	10,0	1,0	19,0
M6	FH-RBC-0630	KTTCM6C1	0.5-3.0	12,7	9,0	8,9	12,3	1,3	19,2
M6	FH-RBC-0655	KTTCM6L1	3.0-5.5	12,7	9,0	8,9	12,3	1,3	21,0
M8	FH-RBC-0830	KTTCM8C1	0.5-3.0	14,8	11,0	10,9	15,0	1,5	21,5
M8	FH-RBC-0855	KTTCM8L1	3.0-5.5	14,8	11,0	10,9	15,0	1,5	24,0
M10	FH-RBC-1040	KTTCM10C1/13	1.0-4.0	19,2	13,0	12,9	17,0	1,6	27,0

# KTR TESTA RIDOTTA CORPO CILINDRICO LISCIO

## RH-RB REDUCED HEAD ROUND PLAIN BODY

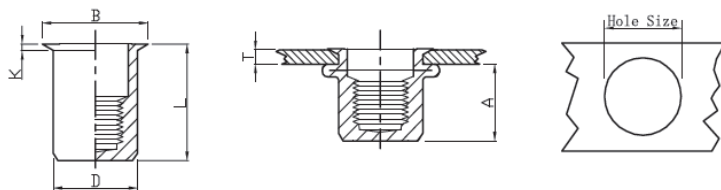


Unit: mm

THREAD	P/N	LD P/N	T (grip range) Min Max	A Ref	Hole size +0.10	D +0.07 -0.1	B +/-0,3	K +/-0,2	L +/-0,3
M3	RH-RB-0315	KTRM3C1	0.5-1.5	6,2	5,0	4,9	6,0	0,5	9,0
M4	RH-RB-0420	KTRM4C1	0.5-2.0	6,5	6,0	5,9	7,0	0,5	10,5
M4	RH-RB-0440	KTRM4L1	2.0-4.0	6,5	6,0	5,9	7,0	0,5	13,0
M5	RH-RB-0520	KTRM5C1	0.5-2.0	7,0	7,0	6,9	8,0	0,5	11,5
M5	RH-RB-0540	KTRM5L1	2.0-4.0	7,0	7,0	6,9	8,0	0,5	13,0
M6	RH-RB-0625	KTRM6C1	0.5-2.5	8,5	9,0	8,9	10,5	0,6	14,0
M6	RH-RB-0650	KTRM6L1	2.5-5.0	8,5	9,0	8,9	10,0	0,6	17,0
M8	RH-RB-0830	KTRM8C1	0.5-3.0	10,0	11,0	10,9	12,0	0,65	16,5
M8	RH-RB-0850	KTRM8L1	3.0-5.0	10,0	11,0	10,9	12,0	0,65	18,5
M10	RH-RB-1030	KTRM10C1/13	0.5-3.0	13,0	13,0	12,9	14,1	0,7	17,7
M10	RH-RB-1055	KTRM10L1/13	3.0-5.5	13,0	13,0	12,9	14,1	0,7	21,0
M10	RH-RB-1030(12H)	KTRM10C1/12	0.5-3.0	12,5	12,0	11,9	13,0	0,7	18,0

# KTRC TESTA RIDOTTA CORPO CILINDRICO LISCIO CHIUSO

## RH-RBC REDUCED HEAD ROUND BODY PLAIN CLOSE END



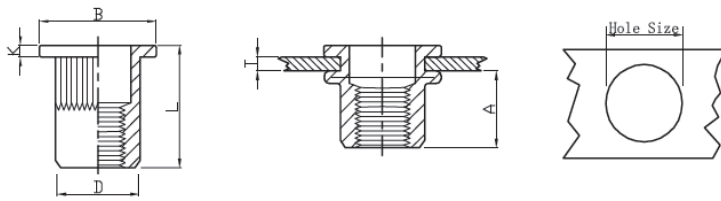
(MATERIALE DISPONIBILE SOLO SU RICHIESTA / ONLY ON DEMAND)

Unit: mm

THREAD	P/N	LD P/N	T (grip range) Min Max	A Ref	Hole size +0.10	D +0.07 -0.1	B +/-0,3	K +/-0,2	L +/-0,3
M4	RH-RBC-0420	KTRCM4C1	0.5-2.0	11,0	6,0	5,9	7,0	0,5	15,0
M4	RH-RBC-0435	KTRCM4L1	2.0-3.5	11,0	6,0	5,9	7,0	0,5	16,0
M5	RH-RBC-0520	KTRCM5C1	0.5-2.0	12,5	7,0	6,9	8,0	0,5	16,5
M5	RH-RBC-0535	KTRCM5L1	2.0-3.5	12,5	7,0	6,9	8,0	0,5	17,5
M6	RH-RBC-0625	KTRCM6C1	0.5-2.5	15,5	9,0	8,9	10,0	0,6	20,5
M6	RH-RBC-0640	KTRCM6L1	2.5-4.0	15,5	9,0	8,9	10,0	0,6	22,0
M8	RH-RBC-0830	KTRCM8C1	0.5-3.0	17,0	11,0	10,9	12,0	0,65	23,0
M8	RH-RBC-0845	KTRCM8L1	2.5-4.5	17,0	11,0	10,9	12,0	0,65	24,5
M10	RH-RBC-1030	KTRCM10C1/13	1.0-3.0	18,2	13,0	12,9	14,1	0,7	24,5
M10	RH-RBC-1050	KTRCM10L1/13	3.0-5.0	18,2	13,0	12,9	14,1	0,7	26,0

# KTTZ TESTA TONDA CORPO CILINDRICO ZIGRINATO

## FH-KB FLAT HEAD KNURLED BODY

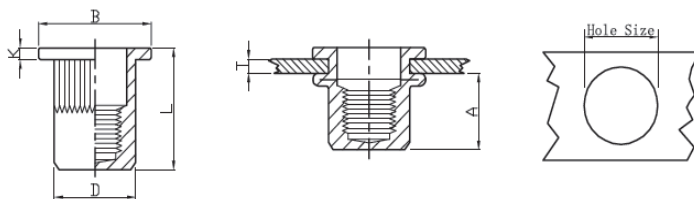


Unit: mm

THREAD	P/N	LD P/N	T (grip range) Min Max	A Ref	Hole size +0.10	D +0.07 -0.1	B +/-0,3	K +/- 0,2	L +/- 0,3
M3	FH-KB-0315	KTTZM3C1	0.5-1.5	6,0	5,0	4,9	8,0	0,8	10,0
M3	FH-KB-0330	KTTZM3L1	2.0-3.0	6,0	5,0	4,9	8,0	0,8	11,0
M4	FH-KB-0420	KTTZM4C1	0.5-2.0	6,0	6,0	5,9	9,0	0,8	10,5
M4	FH-KB-0435	KTTZM4L1	2.0-3.5	6,0	6,0	5,9	9,0	0,8	12,0
M5	FH-KB-0525	KTTZM5C1	0.5-2.5	7,5	7,0	6,9	10,0	1,0	13,0
M5	FH-KB-0550	KTTZM5L1	2.5-5.0	8,5	7,0	6,9	10,0	1,0	16,5
M6	FH-KB-0630	KTTZM6C1	0.5-3.0	9,2	9,0	8,9	12.30(*13.0)	1,3	15,5
M6	FH-KB-0655	KTTZM6L1	3.0-5.5	10,5	9,0	8,9	12.30(*13.0)	1,3	19,5
M8	FH-KB-0835	KTTZM8C1	1.0-3.5	11,5	11,0	10,9	14.5(*16.0)	1,5	18,5
M8	FH-KB-0860	KTTZM8L1	3.5-6.0	11,5	11,0	10,9	14.5(*16.0)	1,5	21,0
M10	FH-KB-1040(13H)	KTTZM10C1/13	1.0-4.0	13,5	13,0	12,9	17.0(*19.0)	1,7	21,5
<b>M10</b>	<b>FH-KB-1065(13H)</b>	<b>KTTZM10L1/13</b>	<b>4.0-6.5</b>	<b>13,5</b>	<b>13,0</b>	<b>12,9</b>	<b>17.0(*19.0)</b>	<b>1,7</b>	<b>24,0</b>
M10	FH-KB-1035(12H)	KTTZM10C1/12	1.0-3.5	11,0	12,0	11,9	16,0	1,6	19,0
M12	FH-KB-1240(15H)	KTTZM12C1/15	1.0-4.0	13,5	15,0	14,9	18,0	1,7	22,0
M12	FH-KB-1265(15H)	KTTZM12L1/15	4.0-6.5	14,0	15,0	14,9	18,0	1,7	25,0
M12	FH-KB-1240(16H)	KTTZM12C1/16	1.0-4.0	15,0	16,0	15,9	22,0	2,0	25,0
M12	FH-KB-1260(16H)	KTTZM12L1/16	3.5-6.0	16,0	16,0	15,9	22,0	2,0	28,0

# KTTZC TESTA TONDA CORPO CILINDRICO ZIGRINATO CHIUSO

## FH-KBC FLAT HEAD KNURLED BODY CLOSE END



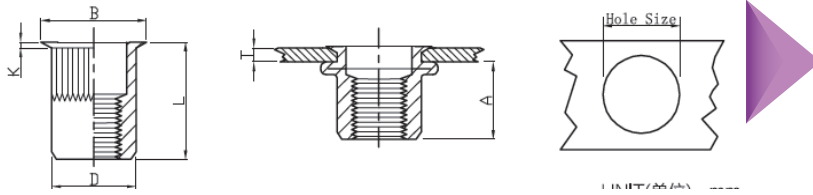
Unit: mm

THREAD	P/N	LD P/N	T (grip range) Min Max	A Ref	Hole size +0.10	D +0.07 -0.1	B +/-0,3	K +/-0,2	L +/-0,3
M4	FH-KBC-0420	KTTZCM4C1	0.5-2.0	11,3	6,0	5,9	9,0	0,8	16,0
M4	FH-KBC-0440	KTTZCM4L1	2.0-4.0	11,3	6,0	5,9	9,0	0,8	18,0
M5	FH-KBC-0530	KTTZCM5C1	0.5-3.0	11,5	7,0	6,9	10,0	1,0	17,0
M5	FH-KBC-0550	KTTZCM5L1	3.0-5.0	11,5	7,0	6,9	10,0	1,0	19,0
M6	FH-KBC-0630	KTTZCM6C1	0.5-3.0	12,7	9,0	8,9	12,3	1,3	19,2
M6	FH-KBC-0650	KTTZCM6L1	3.0-5.0	12,7	9,0	8,9	12,3	1,3	21,0
M8	FH-KBC-0830	KTTZCM8C1	1.0-3.0	14,8	11,0	10,9	15,0	1,50	21,5
M8	FH-KBC-0860	KTTZCM8L1	3.0-6.0	14,8	11,0	10,9	15,0	1,50	24,0
M10	FH-KBC-1040(13H)	KTTZCM10C1/13	1.0-4.0	19,2	13,0	12,9	17,0	1,6	27,0



# KTRZ TESTA RIDOTTA CORPO CILINDRICO ZIGRINATO

## RH-KB REDUCED HEAD KNURLED BODY

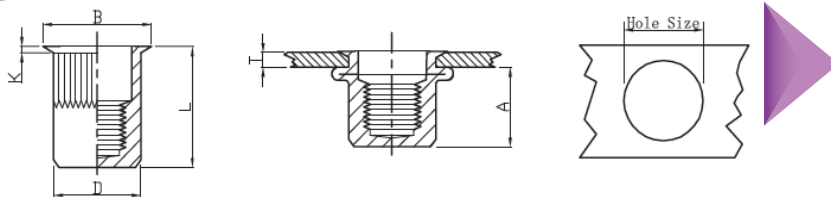


Unit: mm

THREAD	P/N	LD P/N	T (grip range) Min Max	A Ref	Hole size +0.10	D +0.07 -0.1	B +/-0,3	K +/-0,2	L +/-0,3
M3	RH-KB-0320	KTRZM3C1	0.5-2.0	6,2	5,0	4,9	6,0	0,5	9,0
M3	RH-KB-0330	KTRZM3L1	1.5-3.0	6,2	5,0	4,9	6,0	0,5	11,5
M4	RH-KB-0420	KTRZM4C1	0.5-2.0	7,0	6,0	5,9	7,0	0,5	11,2
M4	RH-KB-0440	KTRZM4L1	2.0-4.0	7,0	6,0	5,9	7,0	0,5	13,0
M5	RH-KB-0530	KTRZM5C1	0.5-2.0	7,0	7,0	6,9	8,0	0,5	11,5
M5	RH-KB-0540	KTRZM5L1	2.0-4.0	7,0	7,0	6,9	8,0	0,5	13,0
M6	RH-KB-0630	KTRZM6C1	0.5-3.0	8,5	9,0	8,9	10,0	0,6	14,0
M6	RH-KB-0650	KTRZM6L1	3.0-5.0	8,5	9,0	8,9	10,0	0,6	16,0
M8	RH-KB-0830	KTRZM8C1	0.5-3.0	10,0	11,0	10,9	12,0	0,65	16,5
M8	RH-KB-0850	KTRZM8L1	3.0-5.0	10,0	11,0	10,9	12,0	0,65	18,5
M10	RH-KB-1035(13H)	KTRZM10C1/13	1.0-3.5	12,5	13,0	12,9	14,0	0,7	19,5
M10	RH-KB-1060(13H)	KTRZM10L1/13	3.5-6.0	12,5	13,0	12,9	14,0	0,7	22,0
M10	RH-KB-1035(12H)	KTRZM10C1/12	1.0-3.5	12,5	12,0	11,9	13,0	0,7	19,5
M12	RH-KB-1235(15H)	KTRZM12C1/15	1.0-3.5	15,2	15,0	14,9	16,5	0,85	22,5
M12	RH-KB-1240(16H)	KTRZM12C1/16	1.0-4.0	16,2	16,0	15,9	17,5	0,86	24,2
M12	RH-KB-1260(16H)	KTRZM12L1/16	4.0-6.5	16,2	16,0	15,9	17,5	0,80	27,5

# KTRZC TESTA RIDOTTA CORPO CILINDRICO ZIGRINATO CHIUSO

## RH-KBC REDUCED HEAD KNURLED BODY CLOSE END

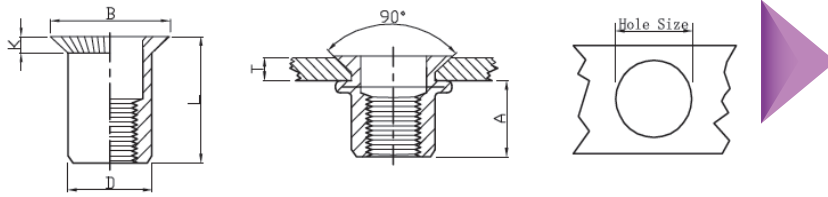


Unit: mm

THREAD	P/N	LD P/N	T (grip range) Min Max	A Ref	Hole size +0.10	D +0.07 -0.1	B +/-0,3	K +/-0,2	L +/-0,3
M4	RH-KBC-0420	KTRZCM4C1	0.5-2.0	11,0	6,0	5,9	7,0	0,5	15,0
M4	RH-KBC-0435	KTRZCM4L1	2.0-3.5	11,0	6,0	5,9	7,0	0,5	16,5
M5	RH-KBC-0520	KTRZCM5C1	0.5-2.0	12,5	7,0	6,9	8,0	0,5	16,5
M5	RH-KBC-0535	KTRZCM5L1	2.0-3.5	12,5	7,0	6,9	8,0	0,5	18,0
M6	RH-KBC-0630	KTRZCM6C1	0.5-3.0	15,5	9,0	8,9	10,0	0,6	20,5
M6	RH-KBC-0645	KTRZCM6L1	3.0-4.5	15,5	9,0	8,9	10,0	0,6	22,0
M8	RH-KBC-0830	KTRZCM8C1	0.5-3.0	17,0	11,0	10,9	12,0	0,65	23,0
M8	RH-KBC-0845	KTRZCM8L1	3.0-4.5	17,0	11,0	10,9	12,0	0,65	24,5
M10	RH-KBC-1030(13H)	KTRZCM10C1/13	1.0-3.0	18,2	13,0	12,9	14,0	0,7	24,5
M10	RH-KBC-1050(13H)	KTRZCM10L1/13	3.0-5.0	18,2	13,0	12,9	14,0	0,7	26,0

# KTS TESTA SVASATA CORPO CILINDRICO LISCIO

## CH-RB COUNTERSUNK HEAD ROUND BODY PLAIN

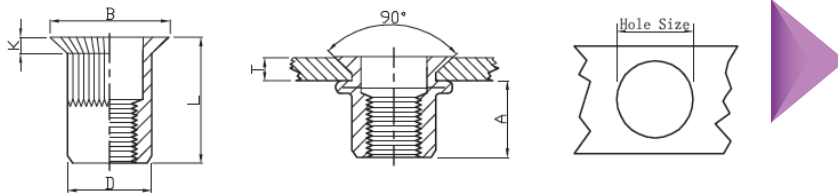


Unit: mm

THREAD	P/N	LD P/N	T (grip range) Min Max	A Ref	Hole size +0.10	D +0.07 -0.1	B +/-0,3	K +/- 0,2	L +/- 0,3
M4	CH-RB-0430	KTSM4C1	1.5-3.0	6,5	6,0	5,9	9,0	1,5	12,0
M5	CH-RB-0535	KTSM5C1	1.5-3.5	7,5	7,0	6,9	10,0	1,5	13,0
M6	CH-RB-0640	KTSM6C1	1.5-4.0	9,0	9,0	8,9	12,0	1,5	15,5
M8	CH-RB-0845	KTSM8C1	2.0-4.5	11,0	11,0	10,9	14,0	1,5	18,5
M10	CH-RB-1050(13H)	KTSM10C1/13	2.0-5.0	13,0	13,0	12,9	16,0	1,5	21,0

# KTSZ TESTA SVASATA CORPO CILINDRICO ZIGRINATO

## CH-KB COUNTERSUNK HEAD KNURLED BODY

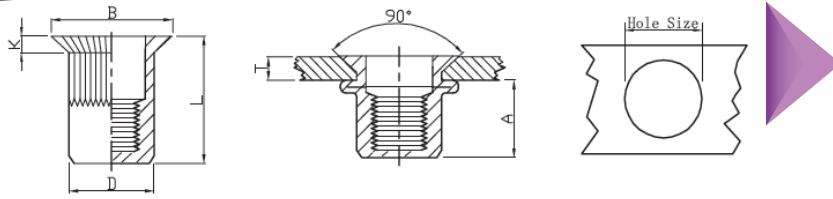


Unit: mm

THREAD	P/N	LD P/N	T (grip range) Min Max	A Ref	Hole size +0.10	D +0.07 -0.1	B +/-0,3	K +/-0,2	L +/-0,3
M3	CH-KB-0325	KTSZM3C1	1.5-2.5	4,5	5,0	4,9	7,5	1,5	9,5
M4	CH-KB-0430	KTSZM4C1	1.5-3.0	6,5	6,0	5,9	9,0	1,5	12,0
M4	CH-KB-0450	KTSZM4L1	3.0-5.0	6,5	6,0	5,9	9,0	1,5	13,0
M5	CH-KB-0535	KTSZM5C1	1.5-3.5	7,5	7,0	6,9	10,0	1,5	13,0
M5	CH-KB-0550	KTSZM5L1	3.5-5.0	7,5	7,0	6,9	10,0	1,5	15,0
M6	CH-KB-0640	KTSZM6C1	1.5-4.0	9,0	9,0	8,9	12,0	1,5	15,5
M6	CH-KB-0660	KTSZM6L1	4.0-6.0	9,0	9,0	8,9	12,0	1,5	17,0
M8	CH-KB-0845	KTSZM8C1	2.0-4.5	11,0	11,0	10,9	14,0	1,5	18,5
M8	CH-KB-0860	KTSZM8L1	4.5-6.0	11,0	11,0	10,9	14,0	1,5	19,0
M10	CH-KB-1050(13H)	KTSZM10C1/13	2.0-5.0	13,0	13,0	12,9	16,0	1,5	21,0
M10	CH-KB-1065(13H)	KTSZM10L1/13	5.0-6.5	13,0	13,0	12,9	16,0	1,5	24,0
M12	CH-KB-1250(16H)	KTSZM12C1/16	2.0-5.0	16,5	16,0	15,9	19,0	1,5	24,0
M12	CH-KB-1270(16H)	KTSZM12L1/16	5.0-7.0	16,5	16,0	15,9	19,0	1,5	27,5

# KTSZC TESTA SVASATA CORPO CILINDRICO ZIGRINATO CHIUSO

## CH-KBC COUNTERSUNK HEAD KNURLED BODY CLOSE END



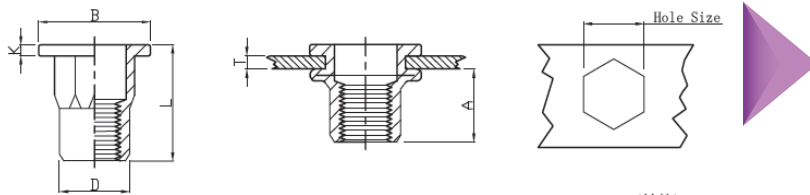
(MATERIALE DISPONIBILE SOLO SU RICHIESTA / ONLY ON DEMAND)

Unit: mm

THREAD	P/N	LD P/N	T (grip range) Min Max	A Ref	Hole size +0.10	D +0.07 -0.1	B +/-0,3	K +/-0,2	L +/-0,3
M4	CH-KBC-0430	KTSZCM4C1	1.5-3.0	12,3	6,0	5,9	9,0	1,5	17,5
M5	CH-KBC-0535	KTSZCM5C1	1.5-3.5	14,0	7,0	6,9	10,0	1,5	19,5
M6	CH-KBC-0640	KTSZCM6C1	1.5-4.0	17,5	9,0	8,9	12,0	1,5	23,5
M8	CH-KBC-0840	KTSZCM8C1	1.5-4.0	20,0	11,0	10,9	14,0	1,5	26,5
M10	CH-KBC-1045	KTSZCM10C1/13	1.5-5.0	21,5	13,0	12,9	16,0	1,5	30,0

# KTTSE TESTA TONDA CORPO SEMI ESAGONALE

## FH-SHB FLAT HEAD SEMI-HEX BODY

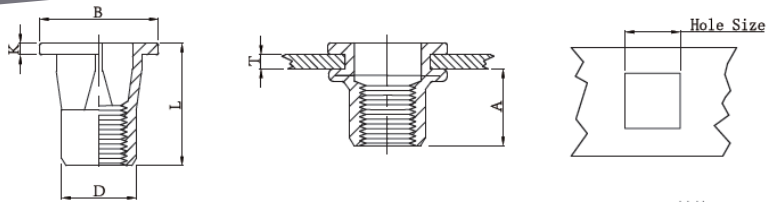


Unit: mm

THREAD	P/N	LD P/N	T (grip range) Min Max	A Ref	Hole size +0.10	D +0.07 -0.1	B +/-0,3	K +/-0,2	L +/-0,3
M4	FH-SHB-0420	KTTSEM4C1	0.5-2.0	6,5	6,0	5,9	9,0	0,8	11,0
M5	FH-SHB-0525	KTTSEM5C1	0.5-2.5	8,0	7,0	6,9	10,0	1,0	13,0
M6	FH-SHB-0630	KTTSEM6C1	0.5-3.0	8,5	9,0	8,9	12,7	1,35	15,0
M8	FH-SHB-0835	KTTSEM8C1	1.0-3.5	10,5	11,0	10,9	16,0	1,5	18,0
M10	FH-SHB-1035(13H)	KTTSEM10C1/13	1.0-3.5	12,5	13,0	12,9	18,0	1,7	21,0
M10	FH-SHB-1035(12H)	KTTSEM10C1/12	1.0-3.5	11,0	12,0	11,9	17,0	1,6	19,0
M12	FH-SHB-1240(15H)	KTTSEM12C1/15	1.0-4.0	14,0	15,0	14,9	20,0	1,7	23,0
M12	FH-SHB-1250(16H)	KTTSEM12C1/16	2.0-5.0	16,5	16,0	15,9	23,0	2,2	27,5

# KTTQ TESTA TONDA CORPO QUADRO

## FH-SQB FLAT HEAD SQUARE BODY



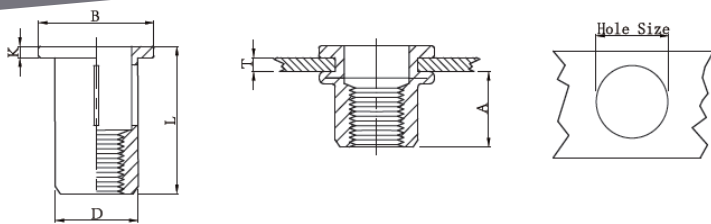
(MATERIALE DISPONILE SOLO SU RICHIESTA / ONLY ON DEMAND)

Unit: mm

THREAD	P/N	LD P/N	T (grip range) Min Max	A Ref	Hole size +0.10	D +0.07 -0.1	B +/-0,3	K +/-0,2	L +/-0,3
M5	FH-SQB-0515	KTTQM5C1	0.5-1.5	8	7,0	6,9	10,5	0,6	11,2
M5	FH-SQB-0530	KTTQM5L1	1.5-3.0	8	7,0	6,9	10,5	0,6	12,7
M6	FH-SQB-0625	KTTQM6C1	0.5-2.5	8,5	9,0	8,9	14,0	0,8	14,3
M6	FH-SQB-0640	KTTQM6L1	2.5-4.0	9,5	9,0	8,9	14,0	0,8	17,2
M8	FH-SQB-0830	KTTQM8C1	1.0-3.0	11,5	11,0	10,9	17,5	1,3	18,6

# KSLB TESTA TONDA CORPO CILINDRICO APERTO

## FH-SLB FLAT HEAD SLOTTED BODY

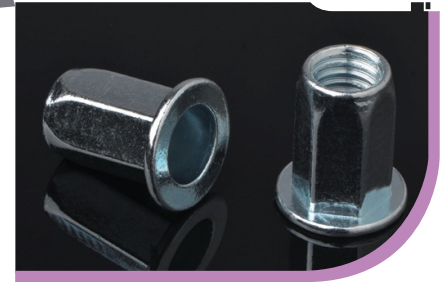
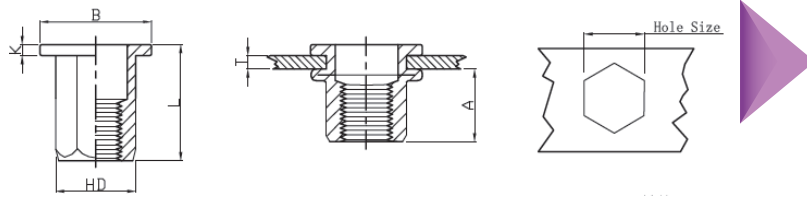


(MATERIALE DISPONILE SOLO SU RICHIESTA / ONLY ON DEMAND)

Unit: mm

THREAD	P/N	LD P/N	T (grip range) Min Max	A Ref	Hole size +0.10	D +0.07 -0.1	B +/-0,3	K +/-0,2	L +/-0,3
M5	FH-SLB-0545	KSLBM5	0.5-4.5	9,6	7,5	7,4	12,7	1,0	22,0
M6	FH-SLB-0670	KSLBM6	0.5-7.0	12,5	8,8	8,7	16,0	1,5	27,0
M8	FH-SLB-0870	KSLBM8	1.0-7.0	14,3	11,1	11,0	19,0	1,6	30,5

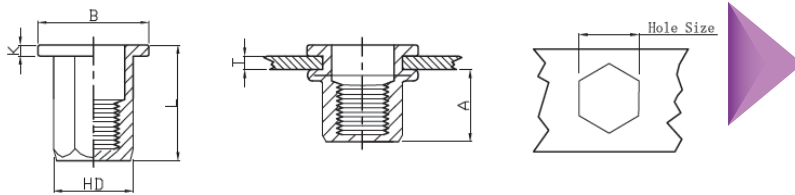
# KTTE TESTA TONDA CORPO ESAGONALE FH-FHB FLAT HEAD FULL HEX BODY



Unit: mm

THREAD	P/N	LD P/N	T (grip range) Min Max	A Ref	Hole size +0.10	HD +0.07 -0.1	B +/-0,3	K +/-0,2	L +/-0,3
M3	FH-FHB-0320	KTTEM3C1	0.5-2.0	5,0	5,0	5,0	7,0	0,8	8,8
M4	FH-FHB-0420	KTTEM4C1	0.5-2.0	6,5	6,0	5,9	9,0	0,8	11,0
M4	FH-FHB-0440	KTTEM4L1	2.0-4.0	6,5	6,0	5,9	9,0	0,8	13,0
M5	FH-FHB-0525	KTTEM5C1	0.5-2.5	8,0	7,0	6,9	10,0	1,00	14,0
M5	FH-FHB-0550	KTTEM5L1	2.5-5.0	8,0	7,0	6,9	10,0	1,00	16,5
M6	FH-FHB-0630	KTTEM6C1	0.5-3.0	8,5	9,0	8,9	12.7(*13.0)	1,35	15.0(*16.0)
M6	FH-FHB-0655	KTTEM6L1	3.0-5.5	8,5	9,0	8,9	13,0	1,35	19,5
M8	FH-FHB-0835	KTTEM8C1	1.0-3.5	10,5	11,0	10,9	16,0	1,5	18,0
M8	FH-FHB-0855	KTTEM8L1	3.0-5.5	10,5	11,0	10,9	16,0	1,5	21,0
M10	FH-FHB-1035(13H)	KTTEM10C1/13	1.0-3.5	12,5	13,0	12,9	18.0(*19.0)	1,7	21.0(*23.0)
M10	FH-FHB-1060(13H)	KTTEM10L1/13	3.5-6.0	12,5	13,0	12,9	19,0	1,7	24,0
M10	FH-FHB-1035(12H)	KTTEM10C1/12	1.0-3.5	13,5	12,0	11,9	18,0	1,7	21,0
M12	FH-FHB-1240(15H)	KTTEM12C1/15	1.0-4.0	14,0	15,0	14,9	20,0	1,7	23,0
M12	FH-FHB-1250(16H)	KTTEM12C1/16	2.0-5.0	16,5	16,0	15,9	23,0	2,0	27,0
M12	FH-FHB-1280(16H)	KTTEM12L1/16	5.0-8.0	16,5	16,0	15,9	23,0	2,0	30,0

# KTTEC TESTA TONDA CORPO ESAGONALE CHIUSO FH-FHBC FLAT HEAD FULL HEX BODY CLOSE END

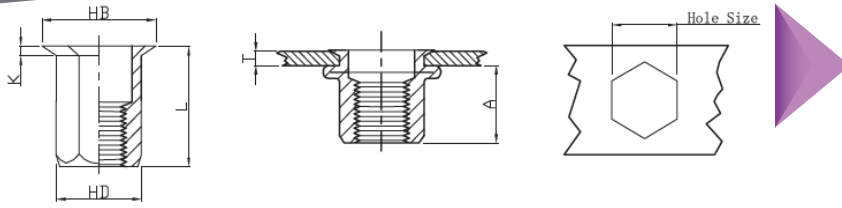


Unit: mm

THREAD	P/N	LD P/N	T (grip range) Min Max	A Ref	Hole size +0.10	HD +0.07 -0.1	B +/-0,3	K +/-0,2	L +/-0,3
M4	FH-FHBC-0420	KTTECM4C1	0.5-2.0	11,0	6,0	5,9	9,0	1,0	15,0
M4	FH-FHBC-0440	KTTECM4L1	2.0-4.0	11,0	6,0	5,9	9,0	1,0	17,0
M5	FH-FHBC-0525	KTTECM5C1	0.5-2.5	13,5	7,0	6,9	10,0	1,0	18,0
M5	FH-FHBC-0550	KTTECM5L1	2.5-5.0	13,5	7,0	6,9	10,0	1,0	20,0
M6	FH-FHBC-0630	KTTECM6C1	0.5-3.0	17,0	9,0	8,9	12,7	1,5	23,0
M6	FH-FHBC-0655	KTTECM6L1	3.0-5.5	17,0	9,0	8,9	12,7	1,5	25,0
M8	FH-FHBC-0835	KTTECM8C1	1.0-3.5	19,0	11,0	10,9	16,0	1,5	26,0
M8	FH-FHBC-0855	KTTECM8L1	3.5-5.5	19,0	11,0	10,9	16,0	1,5	29,0
M10	FH-FHBC-1040(13H)	KTTECM10C1/13	1.0-4.0	25,0	13,0	12,9	19,0	1,8	33,0
M10	FH-FHBC-1060(13H)	KTTECM10L1/13	4.0-6.0	25,0	13,0	12,9	19,0	1,8	35,0

# KTRE TESTA RIDOTTA CORPO ESAGONALE

## RHH-FHB REDUCED HEX HEAD FULL-HEX BODY

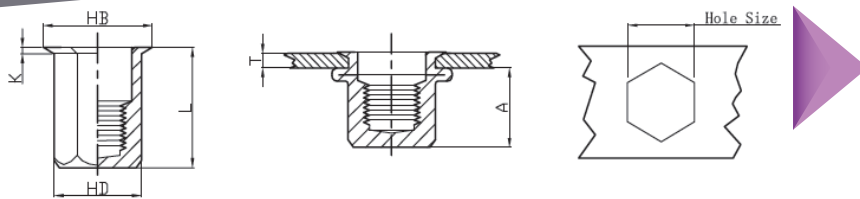


Unit: mm

THREAD	P/N	LD P/N	T (grip range) Min Max	A Ref	Hole size +0.10	HD +0.07 -0.1	HB +/-0,3	K +/-0,2	L +/-0,3
M3	RHH-FHB-0320	KTREM3C1	0.5-1.5	5,5	5,0	4,9	6,0	0,5	8,5
M3	RHH-FHB-0325	KTREM3L1	1.5-3.0	5,5	5,0	4,9	6,0	0,5	10,5
M4	RHH-FHB-0425	KTREM4C1	0.5-2.5	6,7	6,0	5,9	7,0	0,5	11,0
M4	RHH-FHB-0450	KTREM4L1	2.5-5.0	6,7	6,0	5,9	7,0	0,5	13,5
M5	RHH-FHB-0530	KTREM5C1	0.5-3.0	9,0	7,0	6,9	8,0	0,60	14,5
M5	RHH-FHB-0550	KTREM5L1	3.0-5.0	9,0	7,0	6,9	8,0	0,60	16,0
M6	RHH-FHB-0635	KTREM6C1	1.0-3.5	10,0	9,0	8,9	10,0	0,6	16,0
M6	RHH-FHB-0660	KTREM6L1	3.5-6.0	10,0	9,0	8,9	10,0	0,6	18,0
M8	RHH-FHB-0840	KTREM8C1	1.0-4.0	11,5	11,0	10,9	12,0	0,70	18,0
M8	RHH-FHB-0860	KTREM8L1	4.0-6.0	11,5	11,0	10,9	12,0	0,70	20,0
M10	RHH-FHB-1035(13H)	KTREM10C1/13	1.0-3.5	12,5	13,0	12,9	14,5	0,85	19,0
M10	RHH-FHB-1060(13H)	KTREM10L1/13	3.5-6.0	14,5	13,0	12,9	14,5	0,85	23,5
M10	RHH-FHB-1030(12H)	KTREM10C1/12	1.0-3.0	13,2	12,0	12,0	13,6	0,80	20,0
M12	RHH-FHB-1240(15H)	KTREM12C1/15	1.0-4.0	14,0	15,0	14,9	16,9	0,80	25,5
M12	RHH-FHB-1250(16H)	KTREM12C1/16	1.0-4.0	15,5	16,0	15,9	17,5	1,0	25,0
M12	RHH-FHB-1270(16H)	KTREM12L1/16	4.0-7.0	15,5	16,0	15,9	17,5	1,0	28,0

# KTREC TESTA RIDOTTA CORPO ESAGONALE CHIUSO

## RHH-FHBC REDUCED HEX HEAD FULL-HEX BODY CLOSE END

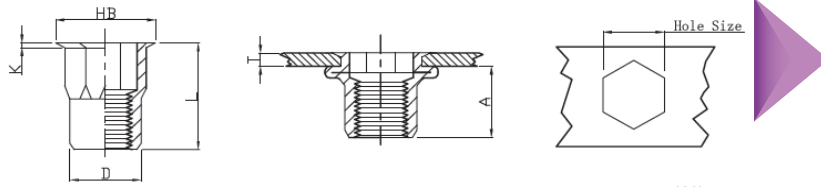


Unit: mm

THREAD	P/N	LD P/N	T (grip range) Min Max	A Ref	Hole size +0.10	HD +0.07 -0.1	HB +/-0,3	K +/-0,2	L +/-0,3
M4	RHH-FHBC-0425	KTRECM4C1	0.5-2.5	12,3	6,0	5,9	7,0	0,5	16,0
M4	RHH-FHBC-0440	KTRECM4L1	2.5-4.0	12,3	6,0	5,9	7,0	0,5	18,0
M5	RHH-FHBC-0530	KTRECM5C1	0.5-3.0	15,2	7,0	6,9	8,0	0,6	20,0
M5	RHH-FHBC-0550	KTRECM5L1	3.0-5.0	15,2	7,0	6,9	8,0	0,6	23,0
M6	RHH-FHBC-0635	KTRECM6C1	0.5-3.5	14,5	9,0	8,9	10,0	0,6	20,5
M6	RHH-FHBC-0655	KTRECM6L1	3.5-5.5	14,5	9,0	8,9	10,0	0,6	23,5
M8	RHH-FHBC-0840	KTRECM8C1	1.0-4.0	17,0	11,0	10,9	12,0	0,7	23,0
M8	RHH-FHBC-0860	KTRECM8L1	4.0-6.0	17,0	11,0	10,9	12,0	0,7	25,0
M10	RHH-FHBC-1045(13H)	KTRECM10C1/13	1.0-4.0	20,0	13,0	12,9	14,5	0,85	28,5
M10	RHH-FHBC-1060(13H)	KTRECM10L1/13	4.0-6.0	20,0	13,0	12,9	14,5	0,85	30,5

# KTRSE TESTA RIDOTTA CORPO SEMI-ESAGONALE

## RHH-IHB REDUCED HEX HEAD INNER-HEX BODY

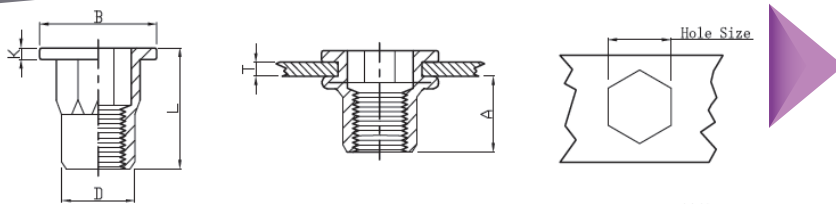


Unit: mm

THREAD	P/N	LD P/N	T (grip range) Min Max	A Ref	Hole size +0.10	D +0.07 -0.1	HB +/-0,3	K +/-0,2	L +/-0,3
M3	RHH-IHB-0315	KTRSEM3C1	0.5-1.5	6,6	5,0	5,0	6,0	0,6	8,5
M4	RHH-IHB-0420	KTRSEM4C1	0.5-2.0	8,3	6,0	5,9	7,0	0,5	12,0
M5	RHH-IHB-0525	KTRSEM5C1	0.5-2.5	8,7	7,0	6,9	8,0	0,5	13,0
M6	RHH-IHB-0635	KTRSEM6C1	1.0-3.5	10,5	9,0	8,9	10,0	0,6	16,0
M8	RHH-IHB-0835	KTRSEM8C1	1.0-3.5	11,3	11,0	10,9	12,0	0,65	17,5
M10	RHH-IHB-1040(13H)	KTRSEM10C1/13	1.0-4.0	12,8	13,0	12,9	14,5	0,75	21,0
M12	RHH-IHB-1240	KTRSEM12C1	1.0-4.0	14,8	16,0	15,9	17,5	1,0	24,0

# KTTSE TESTA TONDA CORPO SEMI-ESAGONALE

## FH-IHB FLAT HEAD INNER-HEX BODY



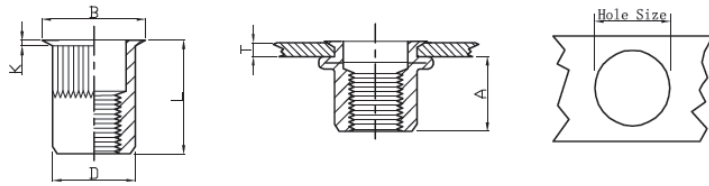
(MATERIALE DISPONIBILE SOLO SU RICHIESTA / ONLY ON DEMAND)

Unit: mm

THREAD	P/N	LD P/N	T (grip range) Min Max	A Ref	Hole size +0.10	D +0.07 -0.1	B +/-0,3	K +/-0,2	L +/-0,3
M4	FH-IHB-0420	KTTSEM4C1	0.5-2.0	7,0	6,0	5,9	9,0	0,8	11,0
M5	FH-IHB-0525	KTTSEM5C1	0.5-2.5	7,5	7,0	6,9	10,0	1,0	12,0
M6	FH-IHB-0630	KTTSEM6C1	0.5-3.0	9,2	9,0	8,9	12,7	1,35	15,5
M8	FH-IHB-0835	KTTSEM8C1	1.0-3.5	11,2	11,0	10,9	16,0	1,5	18,0
M10	FH-IHB-1035(13H)	KTTSEM10C1/13	1.0-3.5	12,8	13,0	12,9	18,0	1,7	21,0

# KTRZ TESTA RIDOTTA CORPO CILINDRICO ZIGRINATO FILETTO IN POLLICI

## RH-KB-UK REDUCED HEAD KNURLED BODY



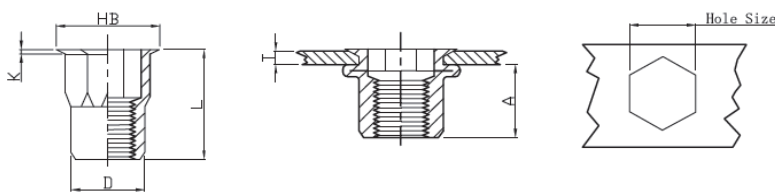
(MATERIALE DISPONIBILE SOLO SU RICHIESTA / ONLY ON DEMAND)

Unit: mm

THREAD	P/N	LD P/N	T (grip range) Min Max	A Ref	Hole size +0.10	D ±0.05 (*+0.07-0.1)	B +/-0,3	K +/-0,2	L +/-0,3
M3	RH-KB-UK-0315	KTRZM3C1P	0.5-1.5	5,5	4,8	4,65	5,4	0,4	9,0
M4	RH-KB-UK-0420	KTRZM4C1P	0.5-2.0	6,5	6,5	6,35	7,0	0,5	10,5
M5	RH-KB-UK-0525	KTRZM5C1P	0.5-2.5	7,5	7,25	7,15	7,85	0,5	12,0
M6	RH-KB-UK-0630	KTRZM6C1P	1.0-3.0	9,2	9,6	9,45	10,3	0,6	15,0
M8	RH-KB-UK-0835	KTRZM8C1P	1.0-3.5	10,5	10,6	10,45	11,3	0,6	16,0
M10	RH-KB-UK-1040(13H)	KTRZM10C1P/13	1.0-4.0	12,8	12,8	12,65	13,8	0,65	20,0

# KTRSE TESTA RIDOTTA CORPO SEMI-ESAGONALE FILETTO IN POLLICI

## RHH-IHB-UK REDUCED HEX HEAD INNER-HEX BODY-UK



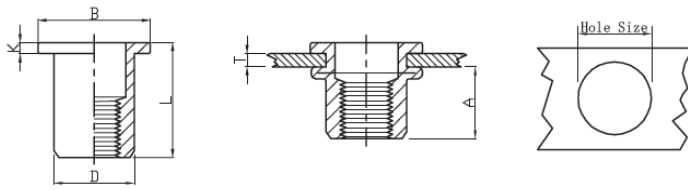
Unit: mm

THREAD	P/N	LD P/N	T (grip range) Min Max	A Ref	Hole size +0.10	D ±0.05 (*±0.08)	HB +/-0,3	K +/-0,2	L +/-0,3
M4	RHH-IHB-UK-0420	KTRSEM4C1P	0.5-2.0	6,5	6,4	6,25	7,25	0,5	10,5
M5	RHH-IHB-UK-0525	KTRSEM5C1P	0.5-2.5	7,5	7,2	7,05	8,1	0,5	12,0
M6	RHH-IHB-UK-0630	KTRSEM6C1P	1.0-3.0	9,2	9,6	9,45	10,5	0,6	15,0
M8	RHH-IHB-UK-0835	KTRSEM8C1P	1.0-3.5	10,5	10,6	10,45	11,5	0,65	16,5



# KTT TESTA TONDA CORPO CILINDRICO LISCIO IN ACCIAIO INOX

## FH-RB/SS FLAT HEAD ROUND BODY PLAIN STAINLESS STEEL

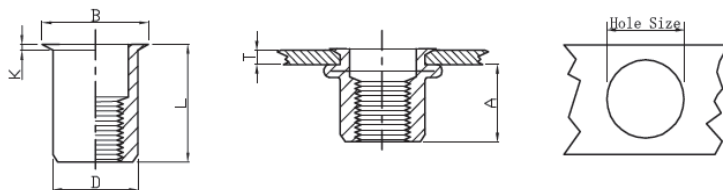


Unit: mm

THREAD	P/N	LD P/N	T (grip range) Min Max	A Ref	Hole size +0.10	D +0.07 -0.1	B +/-0,3	K +/-0,2	L +/-0,3
M3	FH-RB/SS-0320	KTTM3C2	0.5-2.0	4,5	5,0	4,9	7,0	0,8	8,8
M4	FH-RB/SS-0420	KTTM4C2	0.5-2.0	6,0	6,0	5,9	9,0	0,8	10,8
M5	FH-RB/SS-0525	KTTM5C2	0.5-2.5	7,0	7,0	6,9	10,0	1,0	13,0
M6	FH-RB/SS-0630	KTTM6C2	0.5-3.0	8,5	9,0	8,9	13,0	1,5	15,0
M8	FH-RB/SS-0835	KTTM8C2	0.5-3.5	11,0	11,0	10,9	15,0	1,5	18,0
M10	FH-RB/SS-1035(13H)	KTTM10C2/13	1.0-3.5	12,0	13,0	12,9	17,0	1,8	20,3
M12	FH-RB/SS-1235(16H)	KTTM12C2/16	1.0-3.5	16,0	16,0	15,9	19,0	1,8	22,0
M12	FH-RB/SS-1235(15H)	KTTM12C2/15	1.0-3.5	16,0	15,0	14,9	19,0	1,8	22,0

# KTR TESTA RIDOTTA CORPO CILINDRICO LISCIO IN ACCIAIO INOX

## RH-RB/SS REDUCE HEAD ROUND BODY PLAIN STAINLESS STEEL

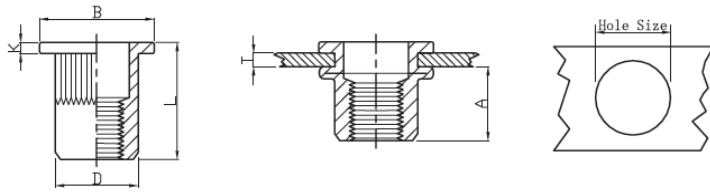


Unit: mm

THREAD	P/N	LD P/N	T (grip range) Min Max	A Ref	Hole size +0.10	D +0.07 -0.1	B +/-0,3	K +/-0,2	L +/-0,3
M3	RH-RB/SS-0315	KTRM3C2	0.5-1.5	5,0	5,0	4,9	5,5	0,35	8,5
M4	RH-RB/SS-0415	KTRM4C2	0.5-1.5	5,5	6,0	5,9	7,0	0,50	10,0
M5	RH-RB/SS-0520	KTRM5C2	0.5-2.0	6,0	7,0	6,9	8,0	0,60	12,0
M6	RH-RB/SS-0630	KTRM6C2	0.5-3.0	9,0	9,0	8,9	10,0	0,60	14,5
M8	RH-RB/SS-0835	KTRM8C2	0.5-3.5	10,0	11,0	10,9	12,3	0,60	16,5
M10	RH-RB/SS-1035(13H)	KTRM10C2/13	0.5-3.5	12,0	13,0	12,9	14,5	0,85	19,0
M12	RH-RB/SS-1235(15H)	KTRM12C2/15	0.5-3.5	14,5	15,0	14,9	16,5	0,85	22,5

# KTTZ TESTA TONDA CORPO CILINDRICO ZIGRINATO IN ACCIAIO INOX

## FH-KB/SS FLAT HEAD KNURLED BODY STAINLESS STEEL

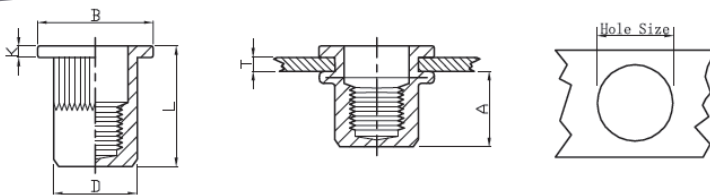


Unit: mm

THREAD	P/N	LD P/N	T (grip range) Min Max	A Ref	Hole size +0.10	D +0.07 -0.1	B +/-0,3	K +/-0,2	L +/-0,3
M3	FH-KB/SS-0320	KTTZM3C2	0.5-2.0	4,5	5,0	5,0	7,0	0,8	8,8
M3	FH-KB/SS-0330	KTTZM3L2	2.0-3.0	6,2	5,0	4,9	7,0	0,8	10,5
M4	FH-KB/SS-0420	KTTZM4C2	0.5-2.0	6,5	6,0	5,9	9,0	0,8	10,5
M4	FH-KB/SS-0440	KTTZM4L2	2.0-4.0	6,5	6,0	5,9	9,0	0,8	13,0
M5	FH-KB/SS-0525	KTTZM5C2	0.5-2.5	8,0	7,0	6,9	10,0	1,0	13,0
M5	FH-KB/SS-0545	KTTZM5L2	2.5-4.5	8,0	7,0	6,9	10,0	1,0	16,5
M6	FH-KB/SS-0630	KTTZM6C2	0.5-3.0	9,2	9,0	8,9	12,3	1,3	15,5
M6	FH-KB/SS-0650	KTTZM6L2	3.5-5.0	9,2	9,0	8,9	12,3	1,3	19,5
M8	FH-KB/SS-0835	KTTZM8C2	1.0-3.5	11,5	11,0	10,9	14,5	1,5	18,5
M8	FH-KB/SS-0860	KTTZM8L2	3.5-6.0	11,5	11,0	10,9	14,5	1,5	20,0
M10	FH-KB/SS-1035(13H)	KTTZM10C2/13	1.0-3.5	13,5	13,0	12,9	17,0	1,6	21,0
M10	FH-KB/SS-1055(13H)	KTTZM10L2/13	4.0-5.5	13,5	13,0	12,9	19,0	2,0	22,0
M10	FH-KB/SS-1035(12H)	KTTZM10C2/12	0.8-3.5	11,0	12,0	11,9	16,0	1,7	19,0
M12	FH-KB/SS-1235(16H)	KTTZM12C2/16	1.0-4.0	16,0	16,0	15,9	23,0	2,0	23,0
M12	FH-KB/SS-1255(16H)	KTTZM12L2/16	3.5-5.5	18,0	16,0	15,9	19,0	1,8	24,3
M12	FH-KB/SS-1235(15H)	KTTZM12C2/15	1.0-3.5	16,0	15,0	14,9	19,0	1,8	22,0
M12	FH-KB/SS-1255(15H)	KTTZM12L2/15	3.5-5.5	18,0	15,0	14,9	19,0	1,8	24,3

# KTTZC TESTA TONDA CORPO CILINDRICO ZIGRINATO CHIUSO ACCIAIO INOX

## FH-KBC/SS FLAT HEAD KNURLED BODY CLOSE END STAINLESS STEEL

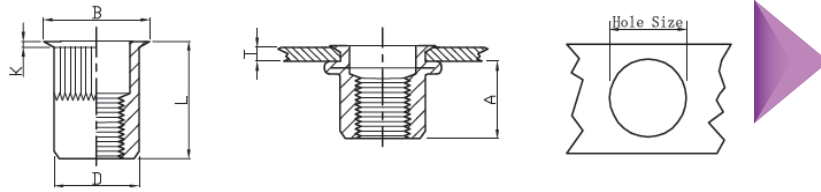


Unit: mm

THREAD	P/N	LD P/N	T (grip range) Min Max	A Ref	Hole size +0.10	D +0.07 -0.1	B +/-0,3	K +/-0,2	L +/-0,3
M4	FH-KBC/SS-0420	KTTZCM4C2	0.5-2.0	11,8	6,0	5,9	9,0	0,8	16,0
M4	FH-KBC/SS-0425	KTTZCM4L2	1.0-2.5	11,8	6,0	5,9	9,0	0,8	18,0
M5	FH-KBC/SS-0525	KTTZCM5C2	0.5-2.5	12,0	7,0	6,9	10,0	1,0	17,0
M5	FH-KBC/SS-0540	KTTZCM5L2	2.5-4.0	12,0	7,0	6,9	10,0	1,0	19,0
M6	FH-KBC/SS-0630	KTTZCM6C2	0.5-3.0	12,7	9,0	8,9	13,0	1,5	19,2
M6	FH-KBC/SS-0655	KTTZCM6L2	3.0-5.5	12,7	9,0	8,9	13,0	1,5	21,0
M8	FH-KBC/SS-0835	KTTZCM8C2	0.5-3.5	14,2	11,0	10,9	15,0	1,5	21,5
M8	FH-KBC/SS-0860	KTTZCM8L2	3.5-6.0	14,2	11,0	10,9	15,0	1,5	24,0
M10	FH-KBC/SS-1035(13H)	KTTZCM10C2/13	0.5-3.5	18,0	13,0	12,9	17,0	1,8	27,0
M10	FH-KBC/SS-1060(13H)	KTTZCM10L2/13	3.5-6.0	18,0	13,0	12,9	17,0	1,8	34,3
M12	FH-KBC/SS-1230(13H)	KTTZCM12C2/16	0.5-3.0	29,5	16,0	15,9	23,0	2,0	39,0

# KTRZ TESTA RIDOTTA CORPO CILINDRICO ZIGRINATO IN ACCIAIO INOX

## RH-KB/SS REDUCE HEAD KNURLED BODY STAINLESS STEEL

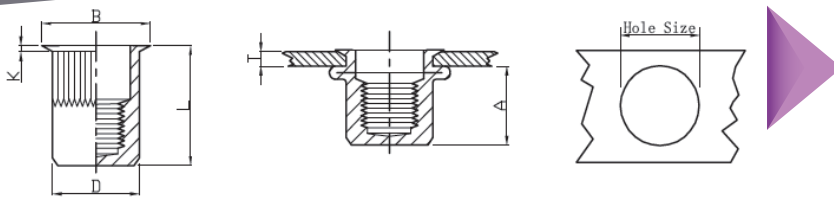


Unit: mm

THREAD	P/N	LD P/N	T (grip range) Min Max	A Ref	Hole size +0.10	D +0.07 -0.1	B +/-0,3	K +/-0,2	L +/-0,3
M3	RH-KB/SS-0315	KTRZM3C2	0.5-1.5	6,8	5,0	5,0	6,0	0,60	8,5
M3	RH-KB/SS-0325	KTRZM3L2	1.5-2.5	6,0	5,0	4,9	5,5	0,35	9,5
M4	RH-KB/SS-0420	KTRZM4C2	0.5-2.0	6,5	6,0	5,9	7,0	0,50	10,5
M4	RH-KB/SS-0440	KTRZM4L2	2.0-4.0	6,5	6,0	5,9	7,0	0,50	13,0
M5	RH-KB/SS-0520	KTRZM5C2	0.5-2.0	7,2	7,0	6,9	8,0	0,50	11,5
M5	RH-KB/SS-0535	KTRZM5L2	2.0-4.0	7,2	7,0	6,9	8,0	0,50	13,0
M6	RH-KB/SS-0625	KTRZM6C2	0.5-2.5	8,7	9,0	8,9	10,0	0,60	14,0
M6	RH-KB/SS-0645	KTRZM6L2	3.0-4.5	8,7	9,0	8,9	10,0	0,60	17,5
M8	RH-KB/SS-0830	KTRZM8C2	0.5-3.0	10,5	11,0	10,9	12,0	0,65	16,5
M8	RH-KB/SS-0850	KTRZM8L2	3.0-5.0	10,5	11,0	10,9	12,0	0,65	18,5
M10	RH-KB/SS-1035	KTRZM10C2/13	1.0-3.5	10,7	13,0	12,9	14,0	0,70	17,7
M10	RH-KB/SS-1035	KTRZM10C2/12	1.0-3.5	10,7	12,0	11,9	13,0	0,70	17,7
M12	RH-KB/SS-1235	KTRZM12C2/16	1.0-3.5	16,0	16,0	15,9	17,6	0,75	24,2

# KTRZC TESTA RIDOTTA CORPO CILINDRICO ZIGRINATO CHIUSO IN ACCIAIO INOX

## RH-KBC/SS REDUCE HEAD KNURLED BODY CLOSE END STAINLESS STEEL

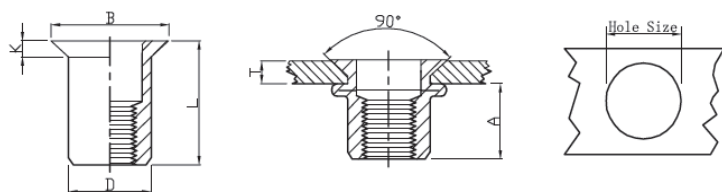


Unit: mm

THREAD	P/N	LD P/N	T (grip range) Min Max	A Ref	Hole size +0.10	D +0.07 -0.1	B +/-0,3	K +/-0,2	L +/-0,3
M3	RH-KBC/SS-0315	KTRZCM3C2	0.5-1.5		5,0	4,9	6,0	0,50	11,0
M3	RH-KBC/SS-0325	KTRZCM3L2	1.5-2.5		5,0	4,9	6,0	0,50	13,0
M4	RH-KBC/SS-0420	KTRZCM4C2	0.5-2.0	11,0	6,0	5,9	7,0	0,50	15,0
M4	RH-KBC/SS-0440	KTRZCM4L2	2.0-4.0	11,0	6,0	5,9	7,0	0,50	16,5
M5	RH-KBC/SS-0525	KTRZCM5C2	0.5-2.5	12,5	7,0	6,9	8,0	0,60	16,5
M5	RH-KBC/SS-0545	KTRZCM5L2	2.5-4.5	12,5	7,0	6,9	8,0	0,60	18,0
M6	RH-KBC/SS-0630	KTRZCM6C2	0.5-3.0	15,5	9,0	8,9	10,0	0,60	20,5
M6	RH-KBC/SS-0645	KTRZCM6L2	3.0-4.5	15,5	9,0	8,9	10,0	0,60	22,0
M8	RH-KBC/SS-0835	KTRZCM8C2	0.5-3.5	17,0	11,0	10,9	12,3	0,60	23,0
M8	RH-KBC/SS-0845	KTRZCM8L2	3.0-4.5	17,0	11,0	10,9	12,3	0,60	24,5
M10	RH-KBC/SS-1035	KTRZCM10C2/13	0.5-3.5	18,2	13,0	12,9	14,5	0,85	24,5
M10	RH-KBC/SS-1050	KTRZCM10L2/15	3.0-5.0	18,2	13,0	12,9	14,5	0,85	26,0
M12	RH-KBC/SS-1240	KTRZCM12C2	2.0-4.0	20,0	15,0	14,9	16,5	0,85	28,0

# KTS TESTA SVASATA CORPO CILINDRICO LISCIO IN ACCIAIO INOX

## CH-RB/SS COUNTERSUNK HEAD ROUND BODY PLAIN STAINLESS STEEL



(MATERIALE DISPONIBILE SOLO SU RICHIESTA / ONLY ON DEMAND)

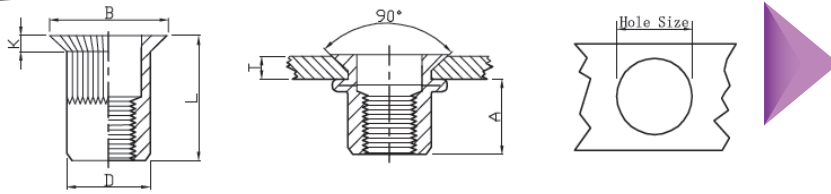
Unit: mm

THREAD	P/N	LD P/N	T (grip range) Min Max	A Ref	Hole size +0.10	D +0.07 -0.1	B +/-0,3	K +/-0,2	L +/-0,3
M3	CH-RB/SS-0330	KTSM3C2	1.5-3.0	5,0	5,0	4,9	7,8	1,5	9,5
M4	CH-RB/SS-0435	KTSM4C2	1.5-3.0	6,0	6,0	5,9	9,0	1,5	11,0
M5	CH-RB/SS-0535	KTSM5C2	1.5-3.5	8,0	7,0	6,9	10,0	1,5	14,0
M6	CH-RB/SS-0640	KTSM6C2	1.5-4.0	9,0	9,0	8,9	12,0	1,5	15,0
M8	CH-RB/SS-0845	KTSM8C2	1.5-4.5	10,0	11,0	10,9	14,0	1,5	16,5
M10	CH-RB/SS-1045(13H)	KTSM10C2/13	1.5-4.5	11,0	13,0	12,9	16,0	1,7	19,0
M12	CH-RB/SS-1250(15H)	KTSM12C2/15	1.5-5.0	13,5	15,0	14,9	18,0	1,8	22,5



# KTSZ TESTA SVASATA CORPO CILINDRICO ZIGRINATO IN ACCIAIO INOX

## CH-KB/SS COUNTERSUNK HEAD KNURLED BODY STAINLESS STEEL

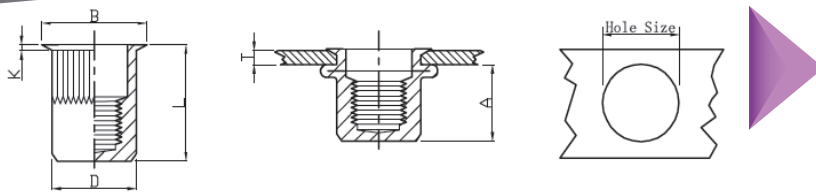


Unit: mm

THREAD	P/N	LD P/N	T (grip range) Min Max	A Ref	Hole size +0.10	D +0.07 -0.1	B +/-0,3	K +/-0,2	L +/-0,3
M3	CH-KB/SS-0330	KTSZM3C2	1.0-2.0	5,0	5,0	4,9	7,8	1,5	9,5
M3	CH-KB/SS-0340	KTSZM3L2	2.0-3.0	6,0	5,0	4,9	7,8	1,5	10,5
M4	CH-KB/SS-0435	KTSZM4C2	1.5-3.5	7,5	6,0	5,9	9,0	1,5	12,0
M4	CH-KB/SS-0450	KTSZM4L2	3.5-5.0	8,0	6,0	5,9	9,0	1,5	13,0
M5	CH-KB/SS-0535	KTSZM5C2	1.5-3.5	7,8	7,0	6,9	10,0	1,5	13,0
M5	CH-KB/SS-0550	KTSZM5L2	3.5-5.0	9,0	7,0	6,9	10,0	1,5	15,0
M6	CH-KB/SS-0640	KTSZM6C2	1.5-4.0	9,0	9,0	8,9	12,0	1,5	15,5
M6	CH-KB/SS-0660	KTSZM6L2	4.0-6.0	11,0	9,0	8,9	12,0	1,5	17,0
M8	CH-KB/SS-0845	KTSZM8C2	2.0-4.5	12,0	11,0	10,9	14,0	1,5	18,5
M8	CH-KB/SS-0860	KTSZM8L2	3.5-6.5	12,5	11,0	10,9	14,0	1,5	21,0
M10	CH-KB/SS-1050(13H)	KTSZM10C2/13	2.0-5.0	13,0	13,0	12,9	16,0	1,5	21,0
M10	CH-KB/SS-1060(13H)	KTSZM10L2/13	4.5-6.0	12,5	13,0	12,9	16,0	1,7	20,5
M12	CH-KB/SS-1250(15H)	KTSZM12C2/15	1.6-5.0	13,5	15,0	14,9	18,0	1,8	22,5

# KTSZC TESTA SVASATA CORPO CILINDRICO ZIGRINATO CIECO IN ACCIAIO INOX

## CH-KBC/SS COUNTERSUNK HEAD KNURLED BODY CLOSE END STAINLESS STEEL



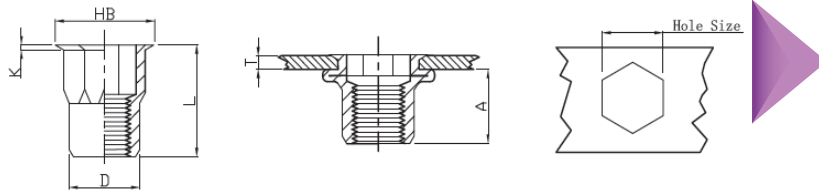
(MATERIALE DISPONIBILE SOLO SU RICHIESTA / ONLY ON DEMAND)

Unit: mm

THREAD	P/N	LD P/N	T (grip range) Min Max	A Ref	Hole size +0.10	D +0.07 -0.1	B +/-0,3	K +/-0,2	L +/-0,3
M4	CH-KBC/SS-0435	KTSZCM4C2	1.6-3.5	12,3	6,0	5,9	9,0	1,5	17,3
M5	CH-KBC/SS-0535	KTSZCM5C2	1.6-3.5	13,5	7,0	6,9	10,0	1,5	19,5
M6	CH-KBC/SS-0640	KTSZCM6C2	1.6-4.0	17,5	9,0	8,9	12,0	1,5	23,5
M8	CH-KBC/SS-0845	KTSZCM8C2	1.6-4.5	20,0	11,0	10,9	14,0	1,5	26,5
M10	CH-KBC/SS-1050(13H)	KTSZCM10C2/13	1.6-5.0	25,5	13,0	12,9	16,0	1,7	33,0
M12	CH-KBC/SS-1235(16H)	KTSZCM12C2/16	1.6-3.5	29,5	16,0	15,9	19,0	1,8	38,0

# KTRSE TESTA RIDOTTA CORPO SEMI-ESAGONALE IN ACCIAIO INOX

## RHH-IHB/SS REDUCE HEX HEAD INNER-HEX BODY STAINLESS STEEL



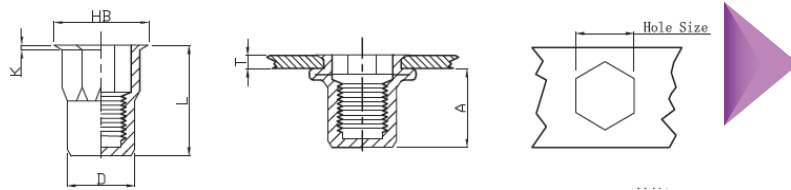
Unit: mm

THREAD	P/N	LD P/N	T (grip range) Min Max	A Ref	Hole size +0.10	D +0.07 -0.1	HB +/-0,3	K +/-0,2	L +/-0,3
M3	RHH-IHB/SS-0315	KTRSEM3C2	0.5-1.5	5,5	5,0	4,9	6,0	0,5	9,0
M3	RHH-IHB/SS-0325	KTRSEM3L2	1.5-2.5	5,5	5,0	4,9	6,0	0,5	11,0
M4	RHH-IHB/SS-0420	KTRSEM4C2	0.5-2.0	8,0	6,0	5,9	7,0	0,5	12,0
M4	RHH-IHB/SS-0440	KTRSEM4L2	2.0-4.0	8,0	6,0	5,9	7,0	0,5	14,0
M5	RHH-IHB/SS-0525	KTRSEM5C2	0.5-2.5	8,2	7,0	6,9	8,0	0,5	13,0
M5	RHH-IHB/SS-0540	KTRSEM5L2	2.5-4.0	8,2	7,0	6,9	8,0	0,5	15,0
M6	RHH-IHB/SS-0630	KTRSEM6C2	1.0-3.0	10,7	9,0	8,9	10,0	0,6	16,0
M6	RHH-IHB/SS-0650	KTRSEM6L2	3.0-5.0	10,7	9,0	8,9	10,0	0,6	18,0
M8	RHH-IHB/SS-0835	KTRSEM8C2	1.0-3.5	11,2	11,0	10,9	12,0	0,65	17,5
M8	RHH-IHB/SS-0850	KTRSEM8L2	3.5-5.0	11,2	11,0	10,9	12,0	0,65	19,5
M10	RHH-IHB/SS-1040(13H)	KTRSEM10C2/13	1.0-4.0	13,5	13,0	12,9	14,5	0,75	21,0
M10	RHH-IHB/SS-1030(12H)	KTRSEM10C2/12	1.0-4.0	13,5	12,0	11,9	13,0	0,8	18,0
M10	RHH-IHB/SS-1050(13H)	KTRSEM10L2/13	4.0-5.5	13,5	13,0	12,9	14,5	0,75	23,0
M12	RHH-IHB/SS-1240(16H)	KTRSEM12C2/16	1.0-4.0	14,8	16,0	15,9	17,5	0,8	24,0
M12	RHH-IHB/SS-1260(16H)	KTRSEM12L2/16	4.0-6.0	14,8	16,0	15,9	17,5	0,8	27,0

# KTRSEC TESTA RIDOTTA CORPO SEMI-ESAGONALE IN ACCIAIO INOX CHIUSI

## RHH-IHBC/SS REDUCE HEAD INNER-HEX BODY CLOSE END

STAINLESS STEEL

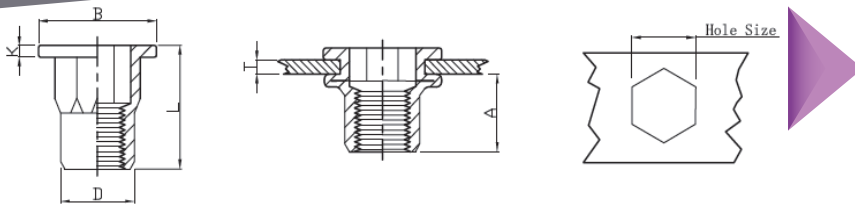


Unit: mm

THREAD	P/N	LD P/N	T (grip range) Min Max	A Ref	Hole size +0.10	D +0.07 -0.1	HB +/-0,3	K +/-0,2	L +/-0,3
M3	RHH-IHBC/SS-0315	KTRSECM3C2	0.5-1.5		5,0	4,9	6,0	0,5	13,0
M3	RHH-IHBC/SS-0325	KTRSECM3L2	1.5-2.5		5,0	4,9	6,0	0,5	15,0
M4	RHH-IHBC/SS-0420	KTRSECM4C2	0.5-2.0	11,5	6,0	5,9	7,0	0,5	15,5
M4	RHH-IHBC/SS-0440	KTRSECM4L2	2.0-4.0	11,5	6,0	5,9	7,0	0,5	17,5
M5	RHH-IHBC/SS-0525	KTRSECM5C2	0.5-2.5	13,5	7,0	6,9	8,0	0,5	18,0
M5	RHH-IHBC/SS-0545	KTRSECM5L2	2.5-4.0	13,5	7,0	6,9	8,0	0,6	20,0
M6	RHH-IHBC/SS-0630	KTRSECM6C2	0.5-3.0	15,8	9,0	8,9	10,0	0,6	21,5
M6	RHH-IHBC/SS-0655	KTRSECM6L2	3.0-5.0	15,8	9,0	8,9	10,0	0,6	23,0
M8	RHH-IHBC/SS-0835	KTRSECM8C2	1.0-3.5	18,2	11,0	10,9	12,0	0,7	24,0
M8	RHH-IHBC/SS-0860	KTRSECM8L2	3.5-5.5	18,2	11,0	10,9	12,0	0,65	26,0
M10	RHH-IHBC/SS-1040(13H)	KTRSECM10C2/13	1.0-4.0	23,2	13,0	12,9	14,5	0,80	30,5
M10	RHH-IHBC/SS-1060(13H)	KTRSECM10L2/13	4.0-5.5	23,2	13,0	12,9	14,5	0,9	33,0
M12	RHH-IHBC/SS-1260(16H)	KTRSECM12C2/16	2.0-6.0	32,8	16,0	15,9	20,0	0,85	37,9

# KTTSE TESTA TONDA CORPO SEMI-ESAGONALE IN ACCIAIO INOX

## FH-IHB/SS FLAT HEAD INNER-HEX BODY STAINLESS STEEL

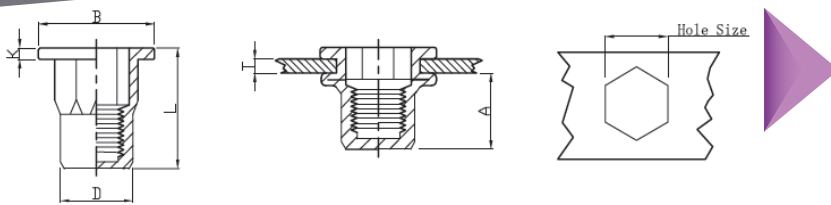


Unit: mm

THREAD	P/N	LD P/N	T (grip range) Min Max	A Ref	Hole size +0.10	D +0.07 -0.1	B +/-0,3	K +/-0,2	L +/-0,3
M3	FH-IHB/SS-0315	KTTSEM3C2	0.5-1.5	6,6	5,0	4,9	6,0	0,6	8,5
M4	FH-IHB/SS-0420	KTTSEM4C2	0.5-2.0	7,2	6,0	5,9	9,0	0,8	11,0
M4	FH-IHB/SS-0435	KTTSEM4L2	2.5-3.5	8,2	6,0	5,9	9,0	0,8	13,0
M5	FH-IHB/SS-0525	KTTSEM5C2	0.5-2.5	7,5	7,0	6,9	10,0	1,0	12,0
M5	FH-IHB/SS-0535	KTTSEM5L2	2.5-3.5	9,5	7,0	6,9	10,0	1,0	14,5
M6	FH-IHB/SS-0630	KTTSEM6C2	0.5-3.0	9,2	9,0	8,9	12,7	1,3	15,5
M6	FH-IHB/SS-0650	KTTSEM6L2	3.5-5.0	12,2	9,0	8,9	13,0	1,5	19,0
M8	FH-IHB/SS-0835	KTTSEM8C2	1.0-3.5	11,0	11,0	10,9	16,0	1,5	18,0
M8	FH-IHB/SS-0850	KTTSEM8L2	3.5-5.0	12,0	11,0	10,9	15,0	1,5	19,0
M10	FH-IHB/SS-1040(13H)	KTTSEM10C2/13	1.0-4.0	13,2	13,0	12,9	18,0	1,7	21,0
M10	FH-IHB/SS-1050(13H)	KTTSEM10L2/13	3.5-5.0	14,2	13,0	12,9	17,0	1,8	22,0
M12	FH-IHB/SS-1250(16H)	KTTSEM12C2/16	2.5-5.0	16,0	16,0	15,9	23,0	2,0	25,0

# KTTSEC TESTA TONDA CORPO SEMI-ESAGONALE CHIUSO ACCIAIO INOX

## FH-IHBC/SS FLAT HEAD INNER-HEX BODY CLOSE END STAINLESS STEEL

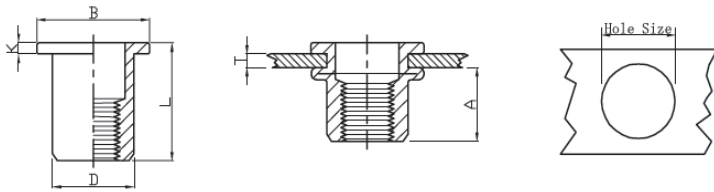


Unit: mm

THREAD	P/N	LD P/N	T (grip range) Min Max	A Ref	Hole size +0.10	D +0.07 -0.1	B +/-0,3	K +/-0,2	L +/-0,3
M4	FH-IHBC/SS-0420	KTTSECM4C2	0.5-2.0	11,5	6,0	5,9	9,0	1,0	16,0
M5	FH-IHBC/SS-0525	KTTSECM5C2	0.5-2.5	13,5	7,0	6,9	10,0	1,0	18,5
M6	FH-IHBC/SS-0630	KTTSECM6C2	0.5-3.0	17,5	9,0	8,9	12,7	1,5	23,0
M8	FH-IHBC/SS-0835	KTTSECM8C2	1.0-3.5	18,2	11,0	10,9	16,0	1,5	25,0
M10	FH-IHBC/SS-1040(13H)	KTTSECM10C2/13	1.0-4.0	25,0	13,0	12,9	19,0	1,7	33,0

# KTT TESTA TONDA CORPO CILINDRICO LISCIO ALLUMINIO

## FH-RB/AL FLAT HEAD ROUND BODY PLAIN ALUMINIUM

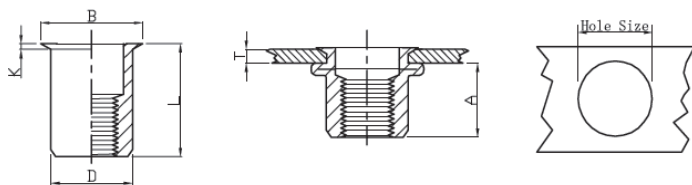


Unit: mm

THREAD	P/N	LD P/N	T (grip range) Min Max	A Ref	Hole size +0.10	D +0.07 -0.1	B	K	L
M3	FH-RB/AL-0315	KTTM3C3	0.5-1.5		5,0	4,9	8,0	0,75	9,0
M4	FH-RB/AL-0420	KTTM4C3	0.5-2.0	6,0	6,0	5,9	8,8	0,8	10,5
M5	FH-RB/AL-0525	KTTM5C3	0.5-2.5	7,5	7,0	6,9	10,0	1,0	13,0
M6	FH-RB/AL-0625	KTTM6C3	0.5-2.5	9,2	9,0	8,9	12,3	1,5	15,0
M8	FH-RB/AL-0830	KTTM8C3	1.0-3.0	10,2	11,0	10,9	14,3	1,5	16,5
M10	FH-RB/AL-1040(13H)	KTTM10C3/13	1.0-4.0	11,5	13,0	12,9	16,3	1,6	19,0

# KTR TESTA RIDOTTA CORPO CILINDRICO LISCIO ALLUMINIO

## RH-RB/AL REDUCED HEAD ROUND BODY PLAIN ALUMINIUM



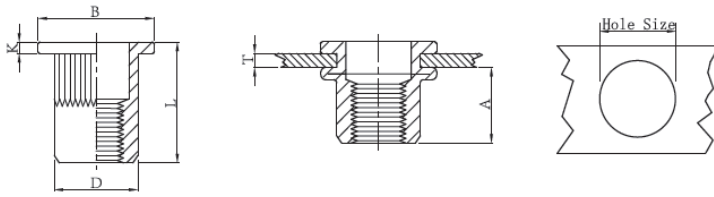
Unit: mm

THREAD	P/N	LD P/N	T (grip range) Min Max	A Ref	Hole size +0.10	D +0.07 -0.1	B	K	L
M3	RH-RB/AL-0315	KTRM4C3	0.5-1.5		5,0	4,9	5,6	0,35	8,5
M4	RH-RB/AL-0420	KTRM4C3	0.5-2.0	6,0	6,0	5,9	7,0	0,5	10,5
M5	RH-RB/AL-0520	KTRM5C3	0.5-2.0	7,5	7,0	6,9	8,0	0,5	11,5
M6	RH-RB/AL-0625	KTRM6C3	0.5-2.5	9,2	9,0	8,9	10,0	0,6	14,0
M8	RH-RB/AL-0825	KTRM8C3	0.5-2.5	10,2	11,0	10,9	12,0	0,65	15,5
M10	RH-RB/AL-1030(13H)	KTRM10C3/13	1.0-3.0	11,5	13,0	12,9	14,1	0,7	17,7



# KTTZ TESTA TONDA CORPO CILINDRICO ZIGRINATO ALLUMINIO

## FH-KB/AL FLAT HEAD KNURLED BODY ALUMINIUM



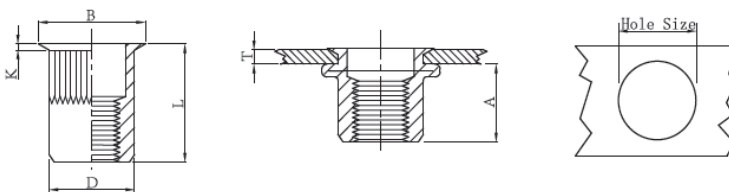
(MATERIALE DISPONILE SOLO SU RICHIESTA / ONLY ON DEMAND)

Unit: mm

THREAD	P/N	LD P/N	T (grip range) Min Max	A Ref	Hole size +0.10	D +0.07 -0.1	B +/-0,3	K +/-0,2	L +/-0,3
M4	FH-KB/AL-0420	KTTZM4C3	0.5-2.0	6,0	6,0	5,9	8,8	0,8	10,5
M5	FH-KB/AL-0525	KTTZM5C3	0.5-2.5	7,5	7,0	6,9	10,0	1,0	13,0
M6	FH-KB/AL-0625	KTTZM6C3	0.5-2.5	9,2	9,0	8,9	12,3	1,5	15,0
M8	FH-KB/AL-0830	KTTZM8C3	1.0-3.0	10,2	11,0	10,9	14,3	1,5	16,5
M10	FH-KB/AL-1040(13H)	KTTZM10C3/13	1.0-4.0	11,5	13,0	12,9	16,3	1,6	19,0

# KTRZ TESTA RIDOTTA CORPO CILINDRICO ZIGRINATO ALLUMINIO

## RH-KB/AL REDUCED HEAD KNURLED BODY ALUMINIUM

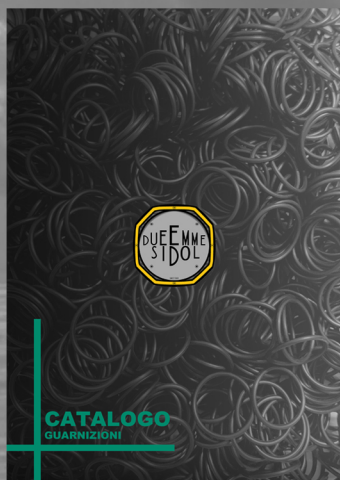
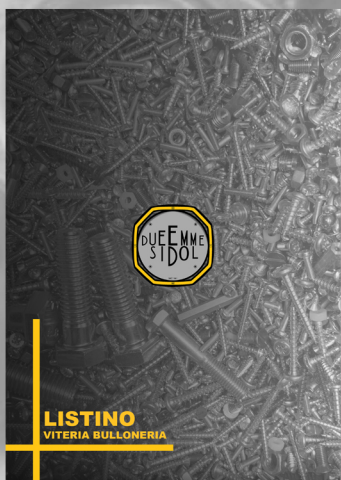


(MATERIALE DISPONILE SOLO SU RICHIESTA / ONLY ON DEMAND)

Unit: mm

THREAD	P/N	LD P/N	T (grip range) Min Max	A Ref	Hole size +0.10	D +0.07 -0.1	B +/-0,3	K +/-0,2	L +/-0,3
M4	RH-KB/AL-0420	KTRZM4C3	0.5-2.0	6,0	6,0	5,9	7,0	0,5	10,5
M5	RH-KB/AL-0520	KTRZM5C3	0.5-2.0	7,5	7,0	6,9	8,0	0,5	11,5
M6	RH-KB/AL-0625	KTRZM6C3	0.5-2.5	9,2	9,0	8,9	10,0	0,6	14,0
M8	RH-KB/AL-0825	KTRZM8C3	0.5-2.5	10,2	11,0	10,9	12,0	0,65	15,5
M10	RH-KB/AL-1030(13H)	KTRZM10C3/13	1.0-3.0	11,5	13,0	12,9	14,1	0,7	17,7





+39 02 2622 5159



[info@dueemmesidol.it](mailto:info@dueemmesidol.it)



**DUEEMME SIDOL s.r.l**  
**Via Giuseppe Mazzini, 33**  
**2099 Sesto San Giovanni**  
**Milano**



[WWW.DUEEMMESIDOL.IT](http://WWW.DUEEMMESIDOL.IT)